



scholasticpbpnetwork.com

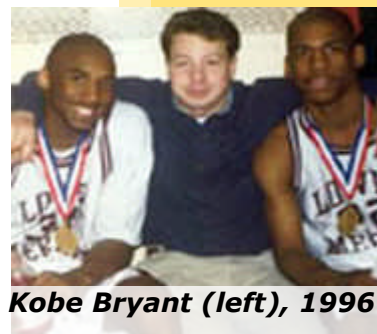


SIKIDS.com

Don't Miss the Kobe Bryant Scholastic Play-by-Play Classic

Saturday, Feb. 2, 2008

Villanova University



Kobe Bryant (left), 1996

FEATURING THE AREA'S TOP TEAMS AND PLAYERS



The #1 high school players in the country, American Christian's Tyreke Evans and Ursuline Academy's Elena Delle Donne

10:15 am- Pennsbury – Neshaminy

12:00 Ursuline Academy - Germantown Academy girls (CN-8)

1:45 Academy of New Church - American Christian

3:30 St Anthony - Rancocas Valley

5:15 Ridley - Lower Merion

7:00 Roman Catholic - Chester

8:45 Gonzaga (DC) - Neumann Goretti



scholasticpbpnetwork.com



**St. Anthony:
Jio Fontan**



**Lower Merion:
Greg Robbins, Carl Johnson**

Tickets will go fast. Sold at all participating schools, Villanova box office, Scholastic Play by Play box office- 1420 Walnut St, suite 605, and at the door.

\$18, \$14, \$12

All student tickets are \$10.

More info: 215.732.2044 or scholasticpbpnetwork.com



Roman Catholic: Will Kirkland, Malik Wayns, Courtney Stanley, Wes Kirkland.



**Gonzaga (DC):
Max Kenyi**



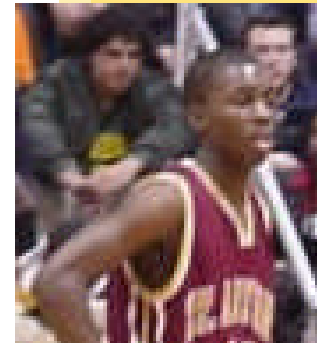
**St. Anthony:
Tyshawn Taylor**



**Germantown Academy Girls:
Jess Carey, Maggie Lucas, Caroline Doty**



Chester: Rahlir Jefferson, Alonzo Jones, Karon Burton, Nasir Robinson



**St. Anthony:
Travon Woodall**



**Rancocas Valley:
Mike Bersch**



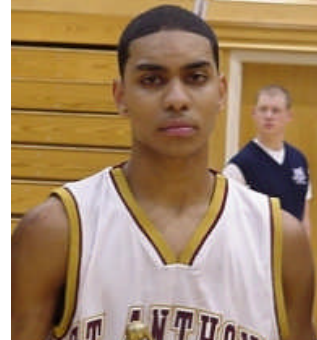
Neumann Goretti: Tony Chenault, Scooter Gillette, Jamal Wilson



**American Christian:
Tyreke Evans**



**Ursuline Academy:
Elena Delle Donne**



**St. Anthony:
Mike Rosario**



**Pennsbury:
Dalton Pepper**



Academy of New Church



American Christian



Ridley: Dan Robinson and Steve Egee